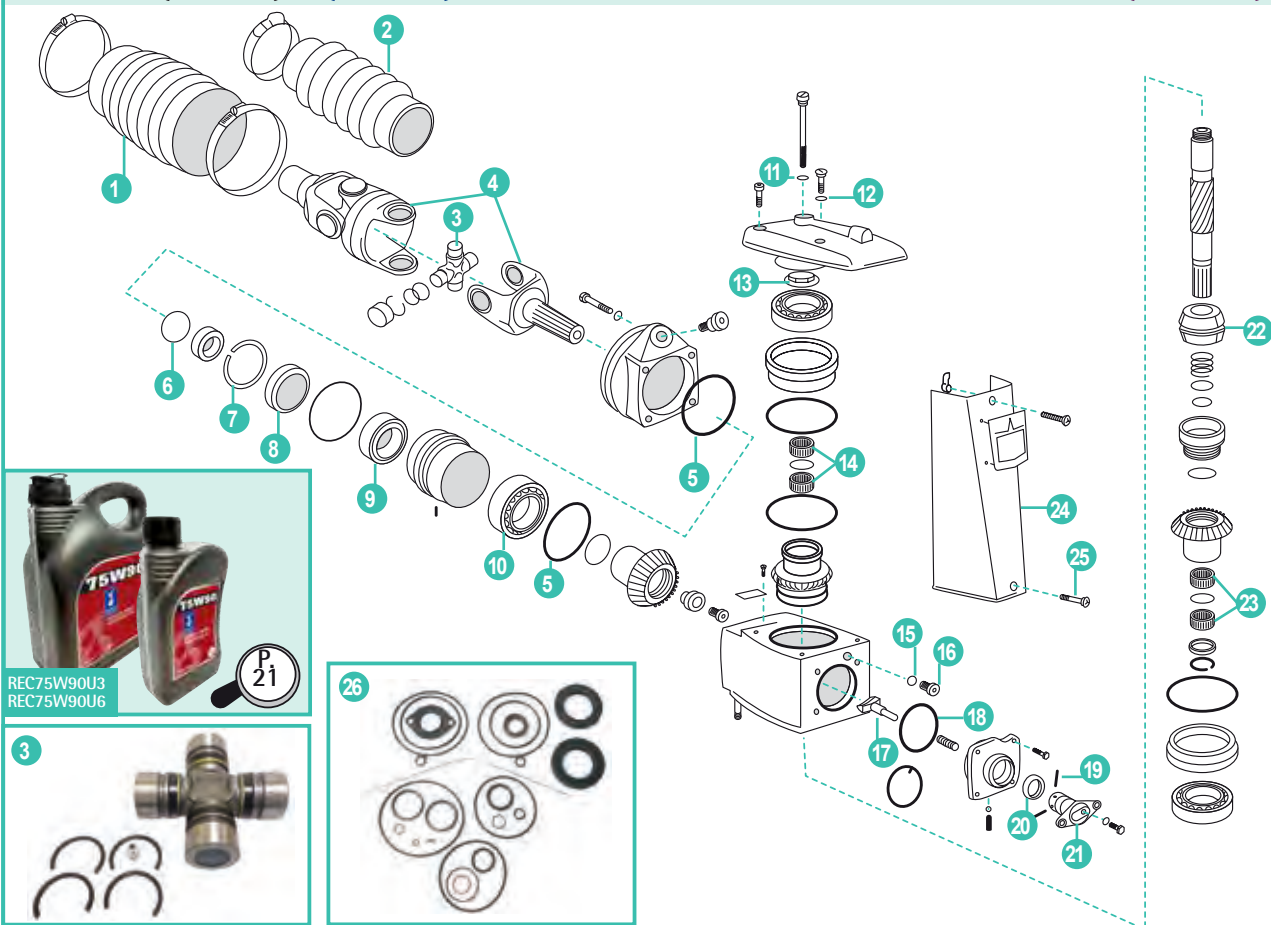


PARTE SUPERIOR  
AQUAMATIC (ANTIGUA)UPPER HOUSING  
(OLD TYPE)PARTE SUPERIORE  
AQUAMATIC (VECCHIO)PARTIE SUPÉRIEURE  
AQUAMATIC (ANCIENNE)

REF	OEM				
1	REC876294 876294	FUELLE CRUCETA	U-JOINT BELLOWS	MANICOTTO STAFFA DI POPPA	SOUFFLET DE CARDAN
2	REC876633 876633	FUELLE ESCAPE CON FLAP	EXHAUST BELLOWS WITH FLAPPERS	CUFFIA SCARICO CON VALVOLA	SOUFFLET D'ECHAPPEMENT A CLAPET
	REC876631 876631	FUELLE ESCAPE SIN FLAP	EXHAUST BELLOWS WITHOUT FLAPPERS	CUFFIA SCARICO SENZA VALVOLA	SOUFFLET D'ECHAP - 290DP
3	REC75832T 853255	CRUCETA CARDAN	U-JOINT	CROCETTA CARDANO	CROISSILLON DE CARDAN
4	RM3860230 3860230	EJE CARDAN 27 ESTRÍAS	YOKE 27 SPLINE	ASSE CARDANO 27 DENTI	CARDAN 27 DENTS
5	REC925256 925256	ARO TÓRICO	O-RING FOR SEALING RING	O-RING	JOINT TORIQUE
6	REC832675 832675	ARO TÓRICO (280, 290, SP, DP)	SEALING RING (280, 290, SP, DP)	O-RING (280, 290, SP, DP)	JOINT TORIQUE (280, 290, SP, DP)
7	REC956000 956000	ARO TÓRICO	O-RING	O-RING	JOINT TORIQUE
8	REC839253 839253	RETÉN ACEITE (280, 290, SP, DP)	OIL SEAL FOR (280, 290, SP, DP)	PARAOLIO (280, 290, SP, DP)	JOINT SPI (280, 290 SP, DP)
	REC942615 942615	RETÉN ACEITE (200, 250, 270)	OIL SEAL FOR (200, 250, 270)	PARAOLIO (200, 250, 270)	JOINT SPI (200, 250, 270)
9	REC183247 183247	COJINETE	BEARING	CUSCINETTO	ROULEMENT
10	REC3850852 3850852	COJINETE	BEARING	CUSCINETTO	ROULEMENT
11	REC955974 955974	ARO VARILLA ACEITE	O-RING FOR DIPSTICK	O-RING ASTICELLA OLIO	JOINT TORIQUE
12	REC955989 955989	ARO TÓRICO	O-RING	O-RING	JOINT TORIQUE
13	REC832669 832669	JUNTA RETÉN TAPA	GASKET/SEAL FOR TOP COVER	GUARNIZIONE COPERCHIO	JOINT COUVERCLE
14	REC853542 853542	COJINETE (70, 275, 280, 290, DP-A, DP-B)	BEARING (70, 275, 280, 290, DP-A, DP-B)	CUSCINETTO (70, 275, 280, 290, DP-A, DP-B)	ROULEMENT (70, 285, 280, 290, DP-A, DP-B)
	REC3857176 3857176	COJINETE (SP-A1, A2, C, C1, DPA1, A2, B1, C, D, D1, E, G, DPX, S, S1, SX)	BEARING (SP-A1, A2, C, C1, DPA1, A2, B1, C, D, D1, E, G, DPX, S, S1, SX)	CUSCINETTO (SP-A1, A2, C, C1, DPA1, A2, B1, C, D, D1, E, G, DPX, S, S1, SX)	ROULEMENT (SP-A1, A2, C, C1, DPA1, A2, B1, C, D, D1, E, G, DPX, S, S1, SX)
15	REC897682 897682	JUNTA	GASKET	GUARNIZIONE	JOINT
16	RM981965 981965	TORNILLO TAPÓN	OIL PLUG	BULLONE TAPPO	BOUCHON
17	RM3856502 3856502	PUNTERA CONO SELECTOR	GEAR DOG	PUNTO CONO SELETTORE	DOIGT DE SELECTEUR
18	REC925093 925093	ARO TÓRICO	O-RING	O-RING	JOINT TORIQUE
19	REC951924 951924	PASADOR	PIN	SPINOTTO	GOUILLE
20	REC853868 853868	RETÉN ACEITE	OIL SEAL FOR SHIFT SHAFT	PARAOLIO	JOINT SPI
21	REC3856008 3856008	PISTÓN SELECTOR	SHIFT PLUNGER	PISTONE SELETTORE	SÉLECTEUR DE VITESSE
22	RM3807613 3807613	CONO SELECTOR	SLIDING SLEEVE	CONO SELETTORE	CONE D EMBRAYAGE
23	RM3852390 3852390	COJINETE	BEARING	CUSCINETTO	ROULEMENT
24	REC832570 832570	TAPA TRASERA	REAR COVER	COPERCHIO POSTERIORE	COUVERCLE ARRIÈRE
25	REC941816 941816	TORNILLO INFERIOR TAPA TRASERA	REAR COVER LOWER SCREW	VITE INFERIORE, COPERCHIO	VIS INFÉRIEUR COUVERCLE ARRIÈRE
26	REC876266 876266	KIT DE RETENES AQ200, 290, AQSP, AQDP	SEAL KIT (AQ200, 290, AQSP, AQDP)	KIT RIPARAZIONE (AQ200, 290, AQSP, AQDP)	KIT JOINTS (AQ200, 290, AQSP, AQDP)