



REF		
GS30208	3/8"	1
GS30209	1/2"	1
GS30210	3/4"	1
GS30211	1"	1
GS30212	1 1/4"	1
GS30213	1 1/2"	1
GS30214	2"	1



REF		
GS30370	3/8"	1
GS30371	1/2"	1
GS30372	3/4"	1
GS30373	1"	1
GS30374	1 1/4"	1
GS30375	1 1/2"	1



REF			
GS30215	3/8"	15 mm	1
GS30216	1/2"	19 mm	1
GS30217	3/4"	25 mm	1
GS30218	1"	30 mm	1
GS30219	1 1/4"	39 mm	1
GS30220	1 1/2"	45 mm	1



AISI 316

PASACASCOS CON REJILLA • STRAINER INTAKE THRU HULL  
PRESA A MARE • PASSE COQUE CREPINE

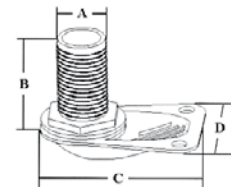


REF		
GS30200	3/8"	1
GS30201	1/2"	1
GS30202	3/4"	1
GS30203	1"	1
GS30204	1 1/4"	1
GS30205	1 1/2"	1
GS30206	2"	1
GS30207	2 1/2"	1
GS30221	3"	1

AISI 316



REF	A	B (mm)	C (mm)	D (mm)	
GS30245	1"	62	98	73	1
GS30246	1 1/4"	85	120	89	1
GS30247	1 1/2"	85	120	89	1



## LATÓN • BRASS • OTTONE • LAITON

VÁLVULAS • VALVES • VALVOLE • VANNES

VÁLVULA DE BOLA • BALL VALVE • VALVOLA A SFERA • VANNE A SPHERE



Fabricado en latón cromado y bola de acero inox con junta de teflón y maneta de INOX.

Chromed brass case, stainless steel ball and handle.

In ottone cromato e leva in acciaio inox, maniglia in INOX.

Levier en laiton chromé sphère en acier inoxydable, et poignée en INOX.

REF		
GS30010	3/8"	1
GS30011	1/2"	1
GS30012	3/4"	1
GS30013	1"	1
GS30014	1 1/4"	1
GS30015	1 1/2"	1
GS30016	2"	1
GS30017	2 1/2"	1

